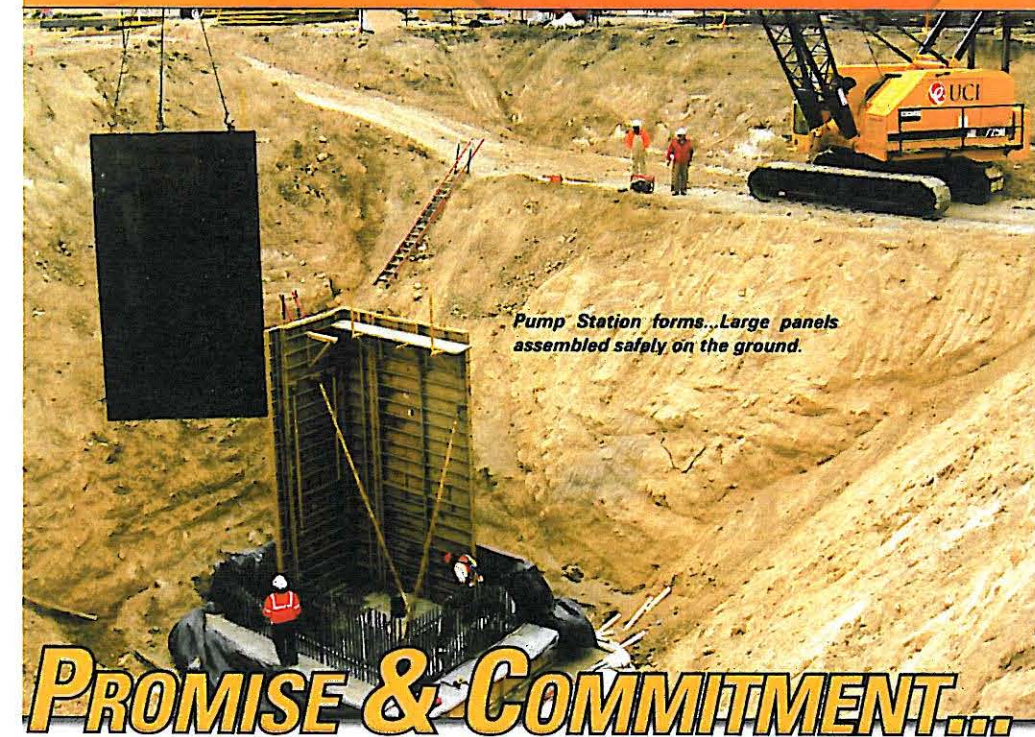


SAFETY FIRST

UCI SAFETY AWARD

UCI (FORMERLY UTILITY CONTRACTORS INC.)

DODGE CITY, KANSAS



Pump Station forms...Large panels assembled safely on the ground.

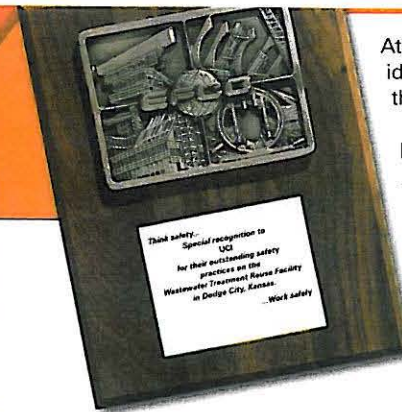
PROMISE & COMMITMENT...

OUR LONG TERM OBJECTIVES

Nearly 15 years ago, Chuck Grier, President of UCI (Formerly Utility Contractors Inc.), made a promise out of respect. Committed to creating a workplace in which employees go home to their families each evening without pain, injury, or illness resulting from a jobsite hazard, Chuck maintains that same promise today to his team. In addition, through his leadership, UCI's commitment to the safety and wellness of its employees has never been stronger. In an industry typically viewed as dangerous, UCI has developed a way to provide the safest of cultures possible.

UCI is a multi-discipline general contractor specializing in the heavy and industrial construction markets. Established in 1950, UCI has grown into a leading edge company with construction sites throughout the United States.

The company works in widely diverse areas, from water and wastewater treatment plants to construction projects for the oil and gas industry. Currently, in Dodge City, Kansas, UCI is developing a wastewater treatment reuse facility; and EFCO forms have contributed to the efficiency of constructing an innovative water treatment solution to provide irrigation for the semi-arid region.



At EFCO®, our employees are our most valuable assets. We share this ideology with our customers in that they, too, recognize the value of their employees and the direct impact they have on the business.

EFCO demonstrates our commitment to safety with an Awards Program. Each winner receives a personalized plaque (pictured left) and appears in FORM MARKS® magazine.

-Al Jennings • Chairman and CEO

Work Place Safety

UCI's comprehensive approach to workplace safety is ingrained in every facet of the job's progress, beginning in the planning stages – including what kind of equipment, forms, and processes will be used. Todd Wedel, Project Manager, commented, "Safety is at the height of all the planning we do for each job. When selecting products and materials, we place emphasis on how safe it will be for our people to put together, and what the risks and challenges are. Our employees know exactly what to expect from EFCO forms and it always fulfills our criteria for the task at hand."

Creating a 40'-0" (12.2 m) deep pump station, round digester tanks and a bio-basin with the flexibility of EFCO's **PLATE GIRDER**®, **REDI-RADIUS**® and other forms has allowed the project to progress while maintaining UCI's high standards of safety within the project scope.

To form the digesters, UCI assembled a 20'-0" (6.1 m) high gang-form of EFCO **REDI-RADIUS**® panels and skip poured the round tank in eight sections to minimize formwork requirements and bulkhead construction for efficiency gains. Ed Bender, Project Superintendent, said, "the ease and flexibility of EFCO forms when creating the digesters allowed us to move smoothly from one pour to the next so that we remained efficient throughout the process. The

forms are easy to adapt from one set to the next."

As UCI continues work on the project, a treatment basin with a layout of 142'-0" x 90'-0" (43.3 m x 27.4 m) is taking shape, in a series of ganged wall placements created with **EFCO PLATE GIRDER** forms and accessory panels. The 24'-0" (7.3 m) tall equipment will be reconfigured five different ways to complete the 34 pours required for construction. UCI's history of using EFCO forms on the Dodge City site, among other project sites, means that employees are aware of the challenges and safety expectations that need to be addressed.

Safety hazards are also assessed daily and resolved while on site. UCI's culture of safety has evolved so much that employees hold one another accountable; the company's 150+ employees are the eyes and ears of keeping one another out of harm's way. "It's a culture that has initiated from the ground-up," President and CEO Chuck Grier commented. "As employees began seeing the benefits that our safety program gives to everyone, and the accident-free results it creates, it has been embraced by the entire company."

In addition to using EFCO products on jobsites, UCI employees prepare mentally and physically for their daily tasks and physical challenges, similar to



those of professional athletes. In 2001, the company partnered with physical therapists to develop a stretching program – and each day, before strapping on a heavy tool belt or sitting down at a computer, employees stretch and warm up their muscles. While it was met with resistance early on, employees have embraced the regimen, and the process has been extended to include UCI's office staff. Since its inception, recordable incidents have trickled to a near-nonexistent pace, having surpassed over four years worked without a lost time incident.

Because UCI's employees are so committed to the success of its safety culture, the company has been highly applauded and each employee personally rewarded for their commitment. Annual trips, family gatherings, and company celebrations give employees an opportunity to acknowledge their high standards within the company – while OSHA, Design-Build Institute of America, Associated General Contractors of America, American Public Works Association, and other entities have bestowed accolades that set UCI far above most heavy construction companies in the U.S.

In 2007 UCI had two sites awarded the prestigious OSHA Voluntary Protection Program (VPP) designation. The OSHA VPP is official recognition of the outstanding efforts of employers and employees who have achieved exemplary occupational safety and healthful working conditions. There are more than 8 million work sites each year in the United States; less than .008% are a recipient of the OSHA VPP designation.



EFCO is an aggressive promoter of jobsite safety. Schedule an EFCO Tool Box Safety Talk with your EFCO Field Supervisor. Think Safety & Work Safely.

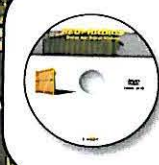
With an estimated date for project completion in May 2011, in Dodge City, Kansas, UCI anticipates a successful and smooth process of taking the wastewater treatment plant online. Recognition such as EFCO's Safety Award is a testament to the collaboration and innovation that has helped UCI maintain its high standards and commitment to providing solutions for clients in the most difficult construction challenges.

- Todd WedelProject Manager
- Ed BenderProject Superintendent
- Craig GalleAssistant Superintendent
- Jeff Brady Field Engineer
- Mike Bowden..... EFCO Territory Manager
- Tom Smith..... EFCO Engineer
- Matt Harrington EFCO Field Supervisor

Using the right equipment is a critical component of job safety as well. When noting the ease and flexibility of using the forms, Bender added,

“ They're easy to set, we like the finishes they provide and the systems are right in line with our high safety standards. When you make the investment of both time and money to train people on using the equipment properly, you are rarely disappointed. In over thirty-five years I've been using EFCO forms, they've always performed brilliantly. ”

Ed Bender
Project Superintendent
UCI



The EFCO REDI-RADIUS® Training DVD #T-4 is available to aid in the assembly, cycling and safety for the REDI-RADIUS system.